

Your Global Air Cargo Gateway

Greenville-Spartanburg, South Carolina



GSP INTERNATIONAL
AIRPORT
ROGER MILLIKEN FIELD

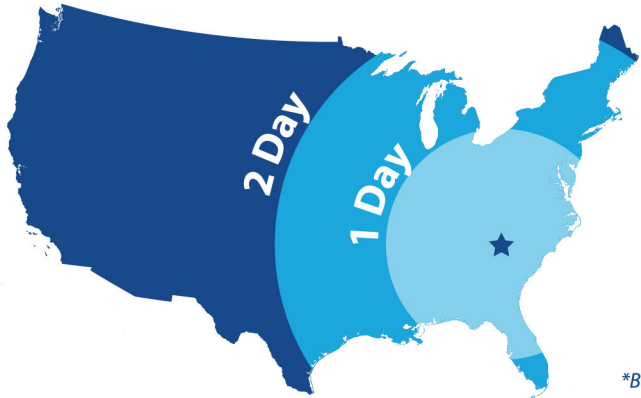
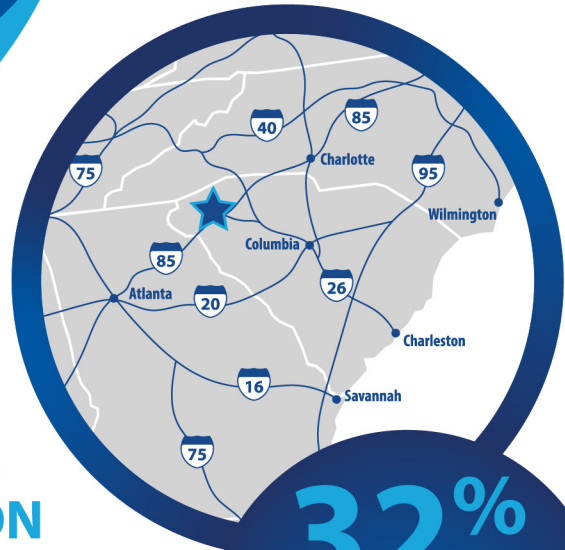


CERULEAN
COMMERCIAL
AVIATION

The Ideal Location

Gateway to the World

GSP is located on the commerce-rich Interstate 85 corridor between Atlanta and Charlotte and is convenient to other southern cities such as Charleston, Knoxville, Chattanooga, and Savannah. GSP and Cerulean provide customers with easy shipping access throughout the region.



Your Shipment Can Reach

107 MILLION
people in 1 day

or

272 MILLION
people in 2 days

which is

18% & **9%**
more than more than
Atlanta (ATL)* Chicago (ORD)*

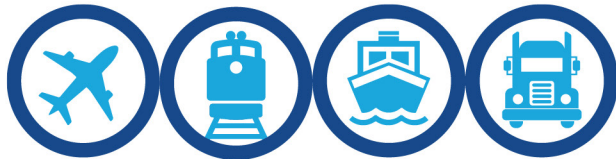
32%
of U.S. Population
Live Within
500 MILES
from GSP

**Based on currently monthly estimates from U.S. Census for populations within 500 miles (1 day)*

Avoid Delays

Beat the Congestion of Other Airports

We know time matters when it comes to air cargo. At GSP, we pride ourselves on being able to reduce on-airport dwell time, allowing your cargo to reach its destination quicker and more efficiently than other gateway airports in the Southeast. With ample airfield and airspace capacity, we can process your cargo in hours instead of days!



Our staff is dedicated to processing your cargo and getting it on the road as quick as possible, providing a seamless transition for you and your customers.



We Turn
Your Cargo in
HOURS
Not Days!

Your Proven Partner

With Plans for Expansion

Plans are in motion to more than double both the number of aircraft parking positions and the airside warehouse space, establishing one of the most robust air cargo facilities in the nation.



Expansion of the aircraft apron will allow for accommodation of up to six Boeing 747 aircraft simultaneously.



Expansion of the cargo facility will double the amount of space from 160,000 SF to over 300,000 SF of warehouse space.



Ample Capacity
and Continuously
Growing to Fit
YOUR
Needs.

Air Cargo at GSP

By the Numbers



185% INCREASE

Cargo volume at GSP has increased nearly threefold since Cerulean's first year of operation in 2016.



OVER 96,800 TONS

GSP's annual volume of air cargo shipped through our facility in tons in 2021.



\$5.46 BILLION

GSP ranks 21st in the U.S. in international freight volume, with over \$5-billion in annual trade worth.



160K

SF warehouse with
apron space for

**Three
747s**



Cerulean Aviation
3090 Gateway Drive
Greer, SC 29651



www.ceruleanaviation.com
864-848-6219
cargosales@ceruleanaviation.com



**Scan to
Learn More**

